

PRELUDE 24 CORROSION RESISTANT

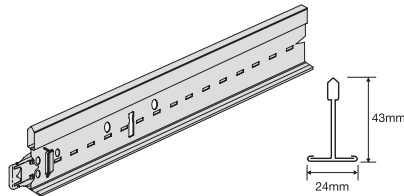


Exposed 24 mm grid system (nominal).

Special paint finish and TLX steel-based composite clip for enhanced corrosion resistance.

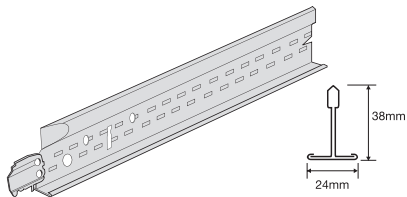
Corrosion resistance 700 hours salt spray test on grids according to EN ISO 9227 standards.

Universal Main Runners 24 Corrosive Resistant Peakform and Superlock Clip (bulb to bulb connection)



Item Nr.	Dimensions		Content / Carton		Weight / Carton kg	Cartons / Pallet
	length (mm)	height (mm)	pcs	lm		
BP 28 40 42	3600	43	20	72,00	21,00	30
BP 28 41 42	3750	43	20	75,00	21,90	30

Cross Tees TLX 24 Corrosive Resistant (Hook system, butt cut)



BP 14 30 32	1200	38	60	72,00	18,20	72
BP 14 31 32	1250	38	60	75,00	18,90	72
BP 14 20 32	600	38	60	36,00	9,10	144
BP 14 21 32	625	38	60	37,50	9,50	144

Section Drawings

Main Runner 24 Corrosive Resistant

Length	78,125	156,25	21 x 156,25	156,25	78,125
3750					
3600	50	100	33 x 100	100	50

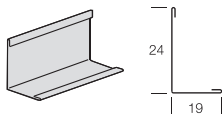
Cross Tee TLX 24 Corrosive Resistant

Length	300	300	300	300
1200				
1250	312,5	312,5	312,5	312,5

Cross Tee TLX 24 Corrosive Resistant

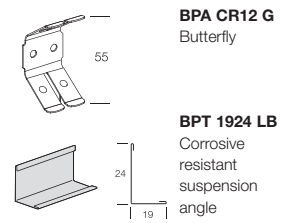
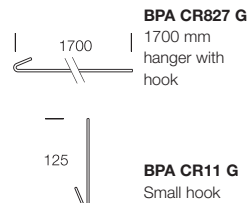
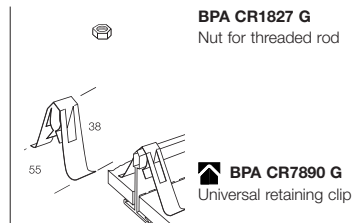
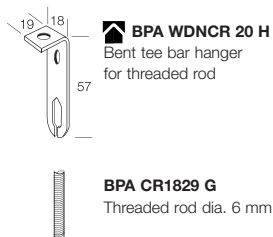
600/625

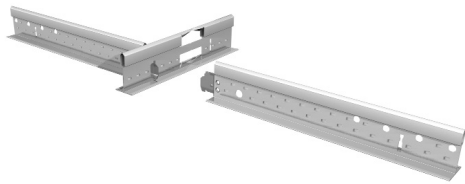
Perimeter Solution



Item Nr.	Description	Dimensions		Content / Carton		Weight / Carton kg
		length (mm)	height (mm)	pcs	lm	
BPT 1924 LB	Corrosive resistant perimeter angle	3050	24	36	109,80	27,60

Accessories - Corrosion resistance 700 hours salt spray test

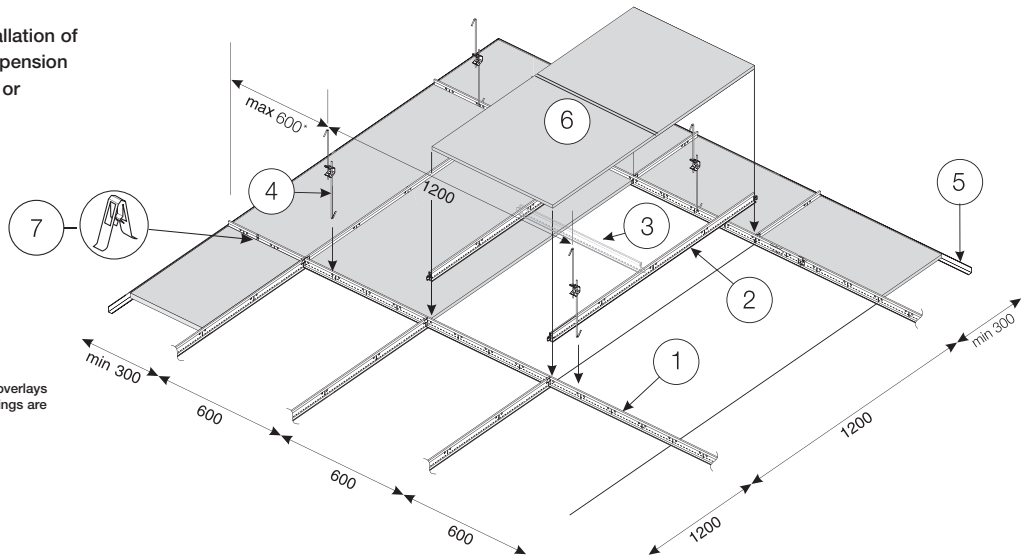




PRELUDE 24 CORROSIVE RESISTANT

System Drawing (module 1200 x 600 mm)

Standard lay-in installation of 24 mm exposed suspension system using Board or Tegular edge tiles.



*reduce to 450 if heavy tile / overlays are used or heavy service fittings are located near the perimeter.

		Quantities required per 1m ² (no waste included)						
6 Tile	Main Runner centres	Hanger centres	1 Main Runner	2 Cross Tee 1200 mm	3 Cross Tee 600 mm	4 Hanger	7 Universal Retaining Clip	
1200 x 600 mm 1,39 pcs	1200 mm	1200 mm	0,84 lm	1,67 lm	-	0,70 pcs	5,56 pcs	
	600 mm	1200 mm	1,67 lm	-	0,84 lm	1,40 pcs	5,56 pcs	
600 x 600 mm 2,78 pcs	1200 mm	1200 mm	0,84 lm	1,67 lm	0,84 lm	0,70 pcs	5,56 pcs	
	600 mm	1200 mm	1,67 lm	-	1,67 lm	1,40 pcs	5,56 pcs	

5 Perimeter Trim approx. 0,70 lm/m²

The chart is for general guidance only.

Grid Load Capacities

Prelude 24 Corrosive resistant The following table gives the maximum permitted hanger distance (mm) along the Peakform Main Runner (BP 28 40 42) for the tile weights and Main Runner spacings noted.

Tile weight	Distance between Main Runners	
	1200 mm Cross Tee BP 14 30 32	600 mm Cross Tee BP 14 20 32
2,5 kg/m ²	1900	2100
3,0 kg/m ²	1800	2100
3,5 kg/m ²	1750	2100
4,0 kg/m ²	1700	2100
5,0 kg/m ²	1600	2000
5,5 kg/m ²	1550	1950
6,0 kg/m ²	1500	1900
7,0 kg/m ²	1450	1800
8,5 kg/m ²	1300	1700
10,5 kg/m ²	1200	1600
13,0 kg/m ²	1050	1500

- The above table values may be influenced by either bending moment or deflection. For other deflection limits (L/300, L/360, L/400), please contact your **Armstrong Technical Sales**.
- Load values determined from laboratory tests in accordance with EN 13964 : 2004.
- Applicable for 600 x 600 mm tiles and assuming that the maximum deflection of the grid is L/500 but not greater than 4 mm (L = span).
- No other applied loads such as luminaires, air diffusers, smoke detectors, sprinklers, hanging signs etc. are permitted.**
- No overlays such as mineral wool or fibre glass quilts, as may be required for enhanced acoustic, fire or thermal performance, are permitted unless their full weight is established and included, together with the weight of the tile, within the appropriate weight groups.

Availability of products may vary according to location. Please contact our **Armstrong Technical Sales** for further details.

UNITED KINGDOM / REPUBLIC OF IRELAND

Armstrong World Industries Ltd.

Building Products Division
Armstrong House
38 Market Square
Uxbridge UB8 1NG

Tel : **0800 371849 (UK)** **FREEPHONE**
1800 409002 (ROI)

Fax : +44 (0) 1895 274287

e-mail : sales-support@armstrong.com

www.armstrong-ceilings.co.uk
www.armstrong-ceilings.ie
www.armstrong.eu

